

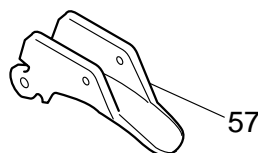
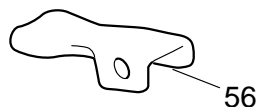
Item No.	Part No.	Qty. Used	Description	Item No.	Part No.	Qty. Used	Description
1	***	4	HEX. SOCKET HEAD BOLT M5X25	53	213028-1	1	O RING 2
2	414957-3	1	COVER	54	213028-1	1	O RING 2
3	415235-4	1	MUFFLER	55	322380-7	1	TRIGGER VALVE CASE
4	258018-7	2	SPRING PIN 2.5-9	56	*	1	IDLER
5	***	1	TOP CAP COMPLETE	57	*	1	TRIGGER
6	261093-4	1	URETHANE WASHER 32	58	262054-7	1	URETHANE RING 3
7	421399-4	1	CUSHION R	59	310098-2	1	FEEDING CLAW
8	213416-2	1	O RING 26	60	231603-1	1	TORSION SPRING 6
9	213462-5	1	O RING 33	61	256432-1	1	PIN 4-4.5
10	414935-3	1	MAIN VALVE	62	****	2	HEX. SOCKET HEAD BOLT M5X12
11	213424-3	1	O RING 27	63	253999-0	1	WASHER 5
12	213423-5	1	O RING 30	64	****	2	FLAT WASHER 5
13	213665-1	1	O RING 56	65	256679-7	1	PIN 4
14	233038-2	4	COMPRESSION SPRING 5	66	233095-0	1	COMPRESSION SPRING 4
15	316380-7	1	SUB VALVE	67	311913-3	1	CHECK CLAW
16	213558-2	1	O RING 42	68	311914-1	1	DOOR
17	421400-5	1	VALVE SHEET	69	262054-7	1	URETHANE RING 3
18	213656-2	1	O RING 53	70	344256-8	1	MAGAZINE LOCK
19	316409-9	1	CYLINDER	71	322532-0	1	LOCK PIN
20	213706-3	1	O RING 67	72	231307-5	1	COMPRESSION SPRING 6
21	213613-0	1	O RING 45	73	150384-7	1	MAGAZINE CAP COMPLETE
22	213475-6	1	O RING 34	74	267010-2	1	FLAT WASHER 5
23	150383-9	1	DRIVER COMPLETE	75	414933-7	1	LOCK LEVER
24	421491-6	1	CUSHION F	76	267010-2	1	FLAT WASHER 5
25	165207-6	1	CONTACT ARM	77	266233-9	1	HEX. SOCKET HEAD BOLT M5X12
27	233097-6	1	COMPRESSION SPRING 7	78	911105-0	1	PAN HEAD SCREW M4X6
28	258021-8	1	SPRING PIN 2-9	79	921322-4	1	HEX. BOLT M6X16
29	256678-9	1	PIN 4	80	341718-7	1	LOCK PLATE
30	233096-8	1	COMPRESSION SPRING 5	81	343977-9	1	LEVER PLATE
31	162170-4	1	LEVER PIN 6	82	257166-9	1	RING 9
32	***	4	HEX. SOCKET HEAD BOLT M6X22	83	265919-2	1	HEX. SOCKET HEAD BOLT M5X30
33	262054-7	1	URETHANE RING 3	84	343978-7	1	SINGLE GUIDE
34	442118-5	1	DRIVER GUIDE GASKET	85	***	1	ADJUSTER PLATE
35	951072-7	1	SPRING PIN 3-24	86	414934-5	1	HOLDER CAP
36	258004-8	1	SPRING PIN 2.5-16	87	231793-0	1	TENSION SPRING 5
37	213218-6	1	O RING 16	88	423232-6	1	RUBBER PLATE 6-20
38	322530-4	1	TRIGGER VALVE STEM	89	**	1	MAGAZINE
39	233035-8	1	COMPRESSION SPRING 3	90	415169-1	1	CHANGE PLATE
40	322531-2	1	PILOT VALVE	91	414934-5	1	HOLDER CAP
41	951072-7	1	SPRING PIN 3-24	92	962112-6	1	RETAINING RING R-22
42	258020-0	2	SPRING PIN 2.5-22	93	262055-5	1	RUBBER RING 16
44	442109-6	1	TOP CAP GASKET	94	344597-2	1	CUP WASHER 5
45	***	1	HOUSING COMPLETE	95	233057-8	1	COMPRESSION SPRING 11
46	442110-1	1	INLET CAP GASKET	96	322579-4	1	PISTON
47	413054-2	1	INLET FILTER	97	213261-5	1	O RING 17
48	***	1	INLET CAP COMPLETE	98	213007-9	1	O RING 8
49	922242-5	2	HEX. SOCKET HEAD BOLT M5X25	99	150386-3	1	DRIVER GUIDE COMPLETE
50	286219-7	1	CAP 12	100	311891-7	1	ADJUSTER
51	343879-9	1	HOLDER				
52	213030-4	1	O RING 8				

Item No.	Part No.	Qty. Used	Description	Item No.	Part No.	Qty. Used	Description
101	165073-1	1	CONTACT TOP				
102	413060-7	1	SAFETY COVER				
103	253999-0	1	WASHER 5				
104	265919-2	1	HEX. SOCKET HEAD BOLT M5X30				
105	253999-0	1	WASHER 5				
106	951054-9	1	SPRING PIN 3-10				
107	**	1	MAGAZINE GUARD				
108	**	1	PAN HEAD SCREW M4X8				
109	***	2	HOUSING GUARD F				
110	***	2	HOUSING GUARD R				
<b><u>ACCESSORY</u></b>							
E02	1922-A	1	SAFETY GOGGLE				

\* See Service Change 1  
 \*\* See Service Change 2  
 \*\*\* See Service Change 3  
 \*\*\*\* See Service Change 4

## SERVICE CHANGE

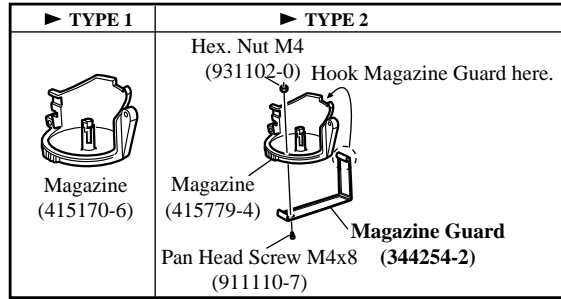
1. Change on Trigger and Idler.



### Interchangeability(I/C)

Item No.	TYPE 1	Q'ty	I/C	TYPE 2	Q'ty	Note
56	Idle 343949-4 (Discontinued)	1	No	Idle 344258-4	1	Interchangeable ↑ as a set ↓
57	Trigger 343950-9 (Discontinued)	1	No	Trigger 165133-9	1	

## 2. Addition of Magazine Guard

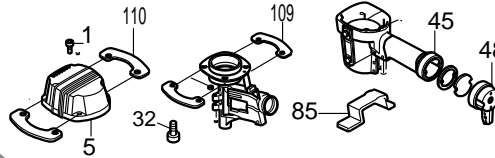


### Interchangeability(I/C)

Item No.	TYPE 1	Q'ty	I/C	TYPE 2	Q'ty	Note
089	Magazine 415170-6 (Discontinued)	1	No	Magazine 415779-4	1	Interchangeable as a set
107				Magazine Guard 344254-2	1	
108				Pan Head Screw M4x8 911110-7	1	
—				*Hex. Nut M4 931102-0	1	

\*Hex. Nut M4 is a component part of Magazine.

## 3. Changes on Housing and Bumper.

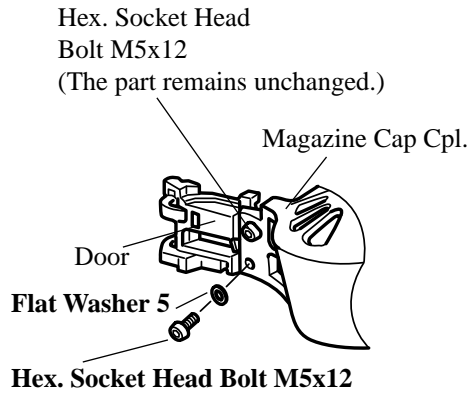


### Interchangeability(I/C)

Item No.	TYPE 1	Q'ty	I/C	TYPE 2	Q'ty
001	H.S.H Bolt M5x20 922232-8	4	No	H.S.H Bolt M5x25 922241-7	4
005	Top Cap Complete 151381-6 (Discontinued)	1	No	Top Cap Complete 151605-0	1
032	H.S.H Bolt M6x20 265962-1	4	No	H.S.H Bolt M6x22 265929-9	4
045	Housing Complete 159536-7 (Discontinued)	1	No	Housing Complete 151604-2	1
048	Inlet Cap Complete 150411-0 (Discontinued)	1	Yes	Inlet Cap Complete 150988-5	1
085	Adjust Plate 165033-3 (Discontinued)	1	Yes	Adjust Plate 165250-5	1
109	Top Cap Bumper 421455-0 (Discontinued)	1	Yes		
110	Housing Bumper L 162167-3 (Discontinued)	1	Yes		
111	Housing Bumper R 162166-5 (Discontinued)	1	Yes		
109				Housing Guard F 344747-9	2
110				Housing Guard R 344748-7	2

The above parts are completely interchangeable as a set.

4. Change of Hex. Socket Head Bolt and Flat Washer for securing Magazine Cap Complete.



▶ TYPE 1	▶ TYPE 2
<p>Hex. Socket Head Bolt M5x12 (265903-7)</p>	<p>Hex. Socket Head Bolt M5x12 (With washer) (266233-9)</p>
<p>Flat Washer 5 (267010-2)</p>	

Interchangeability(I/C)

Item No.	TYPE 1	Q'ty	I/C	TYPE 2	Q'ty	Note
062	Hex. Socket Head Bolt M5x12 265903-7	1	No	Hex. Socket Head Bolt M5x12 266233-9	1	Interchangeable as a set
064	Flat Washer 5 267010-2	1	No			