

SPARE PARTS LIST

MODEL NO. BBC231U

| ITEM | PART NO. | DESCRIPTION | QTY | NOTE |
|------|----------|---|-----|------|
| 001 | 265995-6 | TAPPING SCREW 4X18 | 6 | |
| 002 | 188839-2 | MAIN GRIP SET INC. 15 | 1 | |
| 003 | 911256-9 | PAN HEAD SCREW M5X35 | 1 | |
| 004 | 265995-6 | TAPPING SCREW 4X18 | 1 | |
| 005 | 687261-5 | STRAIN RELIEF | 1 | |
| 006 | 451571-4 | LOCK OFF BUTTON | 1 | |
| 007 | 231473-8 | COMPRESSION SPRING 4 | 1 | |
| 008 | 651533-4 | SWITCH SLE6A2-33 | 1 | |
| 009 | 452594-5 | SWITCH LEVER | 1 | |
| 010 | 451574-8 | INDICATOR | 1 | |
| 011 | 216018-3 | STEEL BALL 5.0 | 1 | |
| 012 | 233211-4 | COMPRESSION SPRING 2 | 1 | |
| 013 | 650629-8 | SWITCH TGR3-2 | 1 | |
| 014 | 686015-7 | RECEPTACLE SLEEVE | 1 | |
| 015 | 188839-2 | MAIN GRIP SET INC. 2 | 1 | |
| 016 | 265995-6 | TAPPING SCREW 4X18 | 1 | |
| 017 | 188659-4 | GRIP SET INC. 18 | 1 | |
| 018 | 188659-4 | GRIP SET INC. 17 | 1 | |
| 019 | 911256-9 | PAN HEAD SCREW M5X35 | 1 | |
| 020 | 331862-8 | HANDLE 19 | 1 | |
| 021 | 168524-3 | KNOB 57 | 1 | |
| 022 | 318429-9 | HANDLE CLAMP | 1 | |
| 023 | 318428-1 | HANDLE HOLDER | 1 | |
| 024 | 233202-5 | COMPRESSION SPRING 20 | 1 | |
| 025 | 318427-3 | PIPE HOLDER | 1 | |
| 026 | 318426-5 | PIPE CLAMP | 1 | |
| 027 | 922241-7 | HEX. SOCKET HEAD BOLT M5X25 | 2 | |
| 028 | 168478-4 | HANGER | 1 | |
| 029 | 922228-9 | H.S.H.BOLT M5X18 WITH WR | 1 | |
| 030 | 424463-0 | CUSHION | 1 | |
| 031 | 141091-3 | SHAFT PIPE COMPLETE | 1 | |
| 035 | 325812-3 | SHAFT | 1 | |
| 036 | 922218-2 | H.S.H.BOLT M5X14 WITH WR | 2 | |
| 037 | 125556-3 | GEAR CASE ASSEMBLY INC. 40-44,46,49-54 | 1 | |
| 040 | 210049-4 | BALL BEARING 609ZZ | 1 | |
| 041 | 961005-4 | RETAINING RING S-9 | 1 | |
| 042 | 962103-7 | RETAINING RING R-24 | 1 | |
| 043 | 922241-7 | HEX. SOCKET HEAD BOLT M5X25 | 1 | |
| 044 | 265590-2 | +HEX.BOLT M8X10 WITH R | 1 | |
| 046 | 188902-1 | CUTTER SHAFT SET | 1 | |
| 049 | 210115-7 | BALL BEARING 6001LLU | 1 | |
| 050 | 962106-1 | RETAINING RING R-28 | 1 | |
| 051 | 331861-0 | RECEIVE WASHER | 1 | |
| 052 | 346084-7 | CLAMP WASHER | 1 | |
| 053 | 168526-9 | CUP | 1 | |
| 054 | 264025-0 | HEX. NUT M10-17 | 1 | |
| 055 | 451566-7 | PROTECTOR | 1 | |
| 056 | 451565-9 | PROTECTOR COVER | 1 | |
| 057 | 213105-9 | O RING 11 | 2 | |
| 058 | 346073-2 | PROTECTOR CLAMP | 1 | |
| 059 | 922353-6 | HEX.SOCKET HEAD BOLT M6X30 | 2 | |

SPARE PARTS LIST

MODEL NO. BBC231U

| ITEM | PART NO. | DESCRIPTION | QTY | NOTE |
|------|-----------|------------------------------|-----|------|
| 060 | 911233-1 | PAN HEAD SCREW M5X20 | 1 | |
| 061 | 451578-0 | PIPE BRACKET COVER | 1 | |
| 062 | 424307-4 | PIPE RUBBER | 1 | |
| 063 | 922231-0 | HEX. SOCKET HEAD BOLT M5X20 | 1 | |
| 064 | 318560-1 | PIPE BRACKET | 1 | |
| 065 | 911233-1 | PAN HEAD SCREW M5X20 | 4 | |
| 066 | 263002-9 | RUBBER PIN 4 | 1 | |
| 067 | 213045-1 | O-RING 6 | 1 | |
| 068 | 325811-5 | SPINDLE HUB | 1 | |
| 069 | 211148-5 | BALL BEARING 6001ZZ | 1 | |
| 070 | 253744-3 | FLAT WASHER 12 | 1 | |
| 071 | 227720-3 | HELICAL GEAR 33 | 1 | |
| 072 | 253744-3 | FLAT WASHER 12 | 1 | |
| 073 | 211150-8 | BALL BEARING 6901ZZ | 1 | |
| 074 | 318559-6 | GEAR BOX | 1 | |
| 075 | 265995-6 | TAPPING SCREW 4X18 | 4 | |
| 076 | 266041-8 | TAPPING SCREW 5X25 | 4 | |
| 077 | 451572-2 | STAND | 1 | |
| 078 | 911233-1 | PAN HEAD SCREW M5X20 | 2 | |
| 079 | 699045-9 | POWER SUPPLY CORD UNIT | 1 | |
| 080 | 265995-6 | TAPPING SCREW 4X18 | 5 | |
| 081 | 867943-7 | BBC231U NAME PLATE | 1 | |
| 082 | 251314-2 | + SCREW M4X12 | 4 | |
| 083 | 346194-0 | BATTERY GUARD | 1 | |
| 084 | 188836-8 | HOUSING SET | 1 | |
| | | INC. 94 | | |
| 085 | 265995-6 | TAPPING SCREW 4X18 | 3 | |
| 086 | 188838-4 | MOTOR HOUSING SET | 1 | |
| | | INC. 90 | | |
| 087 | 213961-7 | O RING 22 | 1 | |
| 088 | 619254-4 | ROTOR | 1 | |
| 089 | 629880-1 | STATOR | 1 | |
| 090 | 188838-4 | MOTOR HOUSING SET | 1 | |
| | | INC. 86 | | |
| 091 | 265995-6 | TAPPING SCREW 4X18 | 1 | |
| 092 | 687261-5 | STRAIN RELIEF | 1 | |
| 093 | 346039-2 | SUPPORT PLATE | 1 | |
| 094 | 188836-8 | HOUSING SET | 1 | |
| | | INC. 84 | | |
| 095 | 643849-1 | TERMINAL | 1 | |
| 096 | 631942-3 | CONTROLLER | 1 | |
| 097 | 631941-5 | CONTROLLER COMPLETE | 1 | |
| | | INC. 95,96 | | |
| 098 | 140285-7 | INDICATION PLATE COMPLETE | 1 | |
| A01 | 122906-3 | BAND ASSY | 1 | |
| A02 | 140583-9 | PROTECTOR EXTENSION COMPLETE | 1 | |
| A03 | 265995-6 | TAPPING SCREW 4X18 | 1 | |
| A04 | 346280-7 | CUTTER | 1 | |
| A05 | 450573-7 | TOOL COVER | 2 | |
| A06 | 782210-8 | SOCKET WRENCH 17 | 1 | |
| A07 | 783202-0 | HEX. WRENCH 4 | 1 | |
| A08 | 783217-7 | HEX. WRENCH 5 | 1 | |
| A09 | 831304-7 | ACCESSORY BAG | 1 | |
| A10 | ***DC36RA | DC36RA FAST CHARGER | 1 | |
| A11 | 194873-2 | BATTERY BL3626 SET | 1 | |
| A12 | B-14118 | STAR BLADE 230X4TX25.4 | 1 | |

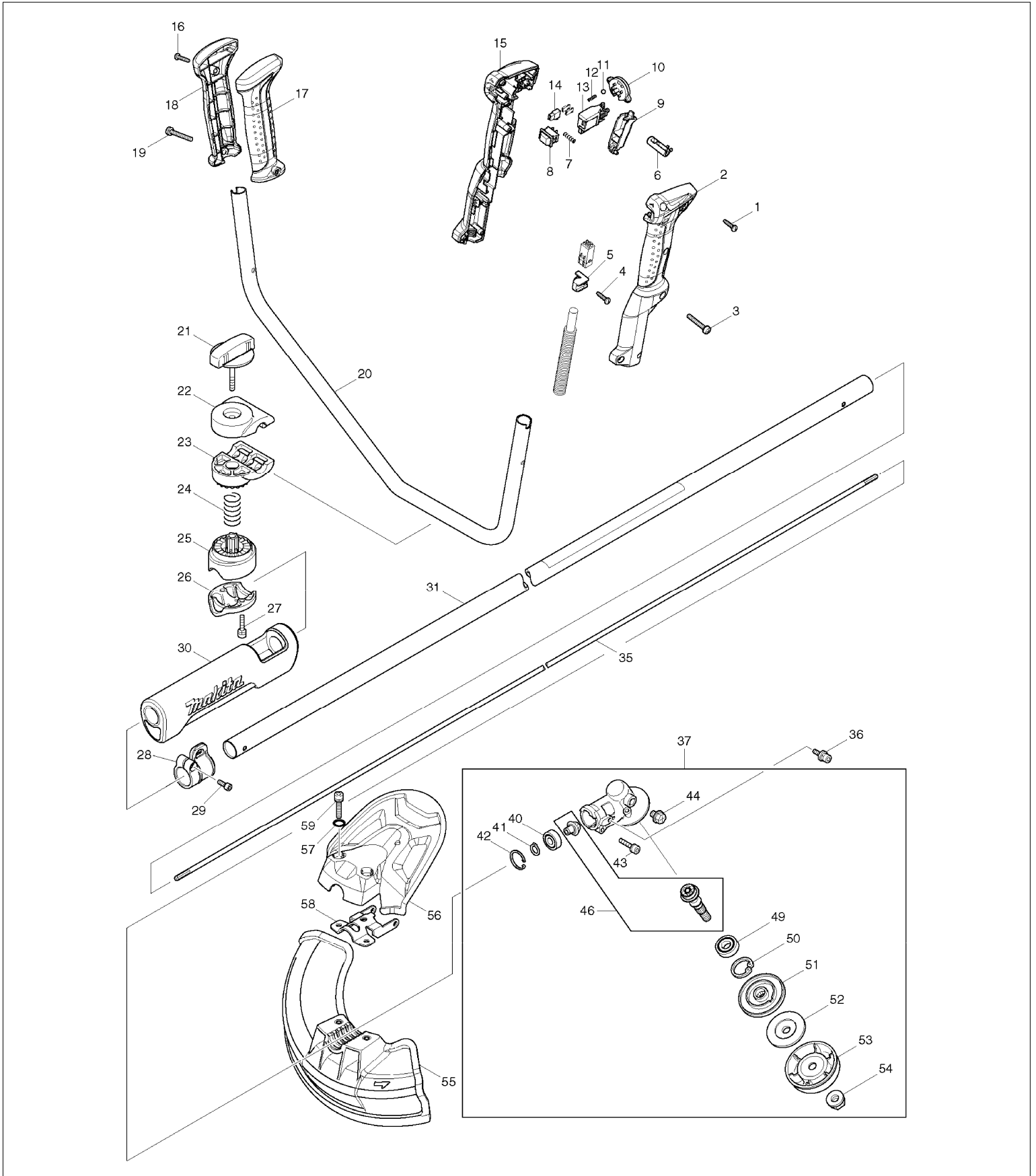
SPARE PARTS LIST

MODEL NO. BBC231U

| ITEM | PART NO. | DESCRIPTION | QTY | NOTE |
|------|----------|---------------|-----|------|
| A13 | 451153-2 | BATTERY COVER | 1 | |

SERVICE DRAWING

MODEL NO. BBC231U



SERVICE DRAWING

MODEL NO. BBC231U

