



TECHNICAL INFORMATION

- Model No.** ▶ UH200D
- Description** ▶ Cordless Hedge Trimmer 200mm (7-7/8)

CONCEPT AND MAIN APPLICATIONS

Model UH200D is 200mm Cordless hedge trimmer powered by 10.8V/ 1.3Ah Li-ion battery BL1013.

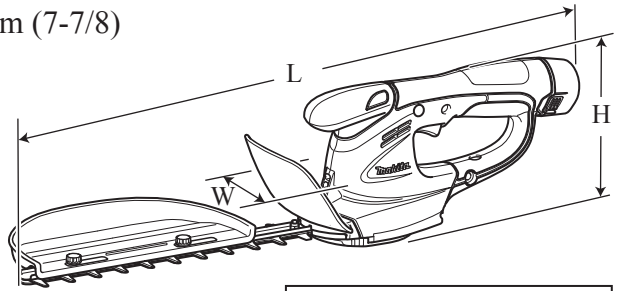
Its main features are:

- Lightweight and compact design for easy handling
- Optional Grass shear blade kit can convert this model into Model UM164D Cordless grass shear.

This product is available in the following variations.

Model No.	Battery		Charger
	type	quantity	
UH200DZ	No	/	No
UH200DW	BL1013 (Li-ion 1.3Ah)	1	DC10WA
UH200DWE		2	

All models also include the accessories listed in "Standard equipment".



Dimensions*1: mm (")	
Length (L)	460 (18-1/8)
Width (W)	120 (4-3/4)
Height (H)	130 (5-1/8)

*1 without chip receiver

Specification

Specification		Model	UH200D
Battery	Voltage: V		10.8
	Capacity: Ah		1.3
	Cell		Li-ion
No load speed: min-1=spm*2			1,250
Blade length: mm (")			200 (7-7/8)
Tooth spacing: mm (")			26 (1)
Maximum branch diameter*3: mm (")			8 (5/16)
Overload protection			Yes
Weight according to EPTA-Procedure 01/2003 *4: kg (lbs)			1.2 (2.7)

*2 spm= stroke per minute

*3: Indicates maximum diameter of the branch that can be received between adjacent two blade teeth. (See the figure on right.)



*4 with hedge trimmer blade, chip receiver

Standard equipment

- Chip receiver 1
- Blade cover 1

Note: The standard equipment for the tool shown above may differ by country.

Optional accessories

- Battery BL1013
- Charger DC10WA
- Grass shear blade kit*5 (with a bottle of lubricant grease)
- Hedge trimmer blade kit*6 (with a bottle of lubricant grease)
- Extension handle kit*5
- Chip receiver set*6
- Accessory kit for use as a hedge trimmer*6 (including Blade cover, etc.)
- Accessory kit for use as a grass shear*5 (including Base frame, etc.)

*5 for use as a grass shear

*6 for use as a hedge trimmer

► **Repair**

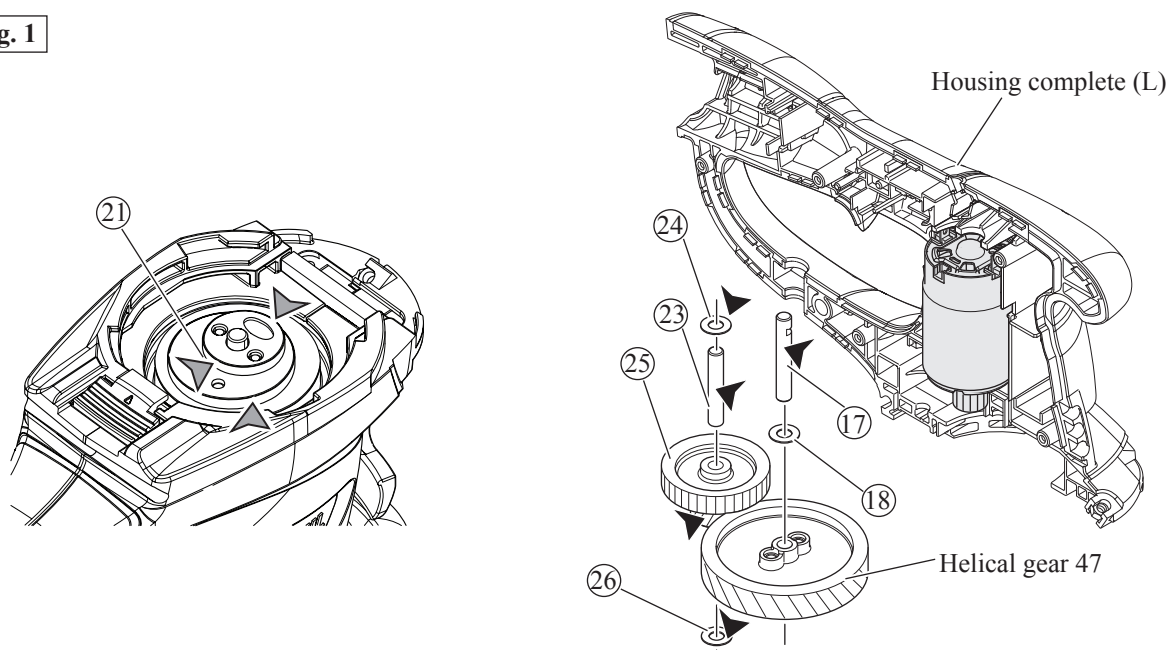
CAUTION: Repair the machine in accordance with “Instruction manual” or “Safety instructions”.

[1] LUBRICATIONS

Apply the following lubricant to protect parts and product from unusual abrasion.

Item No.	Description	Portion to lubricate	Lubricant	Amount
⑰	Pin 6 (with notch)	Drum portion for smooth rotation of Helical gear 47	Makita grease N No.2 ▼	a little
⑱⑳㉑㉒	Washer 6	Whole portion		
㉓	Crank	Drum portions where Blade contact	Molybdenum disulfide ▼	1.5g
㉔	Pin 6	Drum portion for smooth rotation of ㉕ Gear 12-31	Makita grease N No.2 ▼	a little
㉖	Gear 12-31	Gear teeth with which Helical gear 47 and DC motor gear engage		2g

Fig. 1



► **Repair**

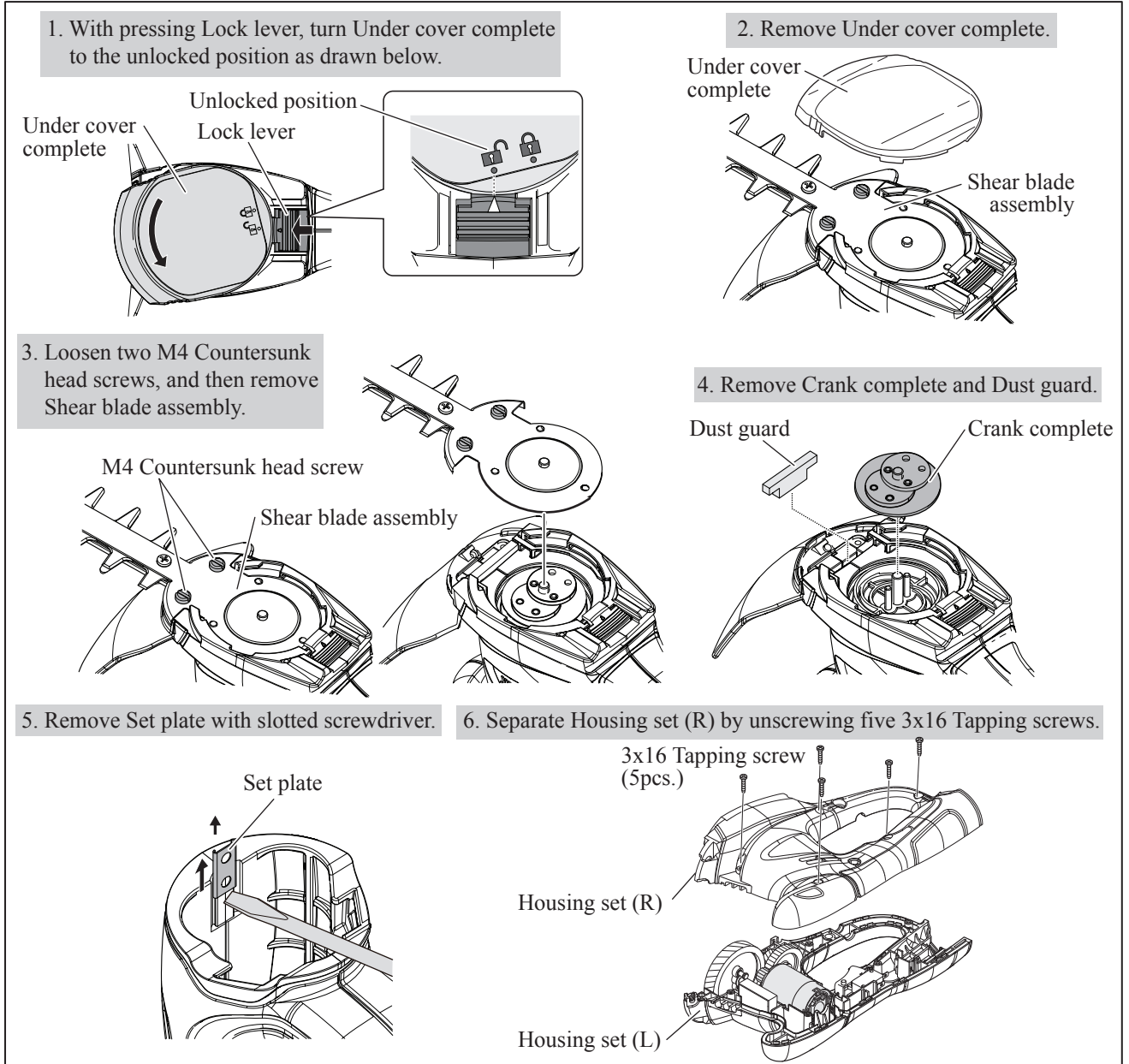
[2] DISASSEMBLY/ASSEMBLY

[2]-1. Gear 12-31, Helical gear 47

DISASSEMBLING

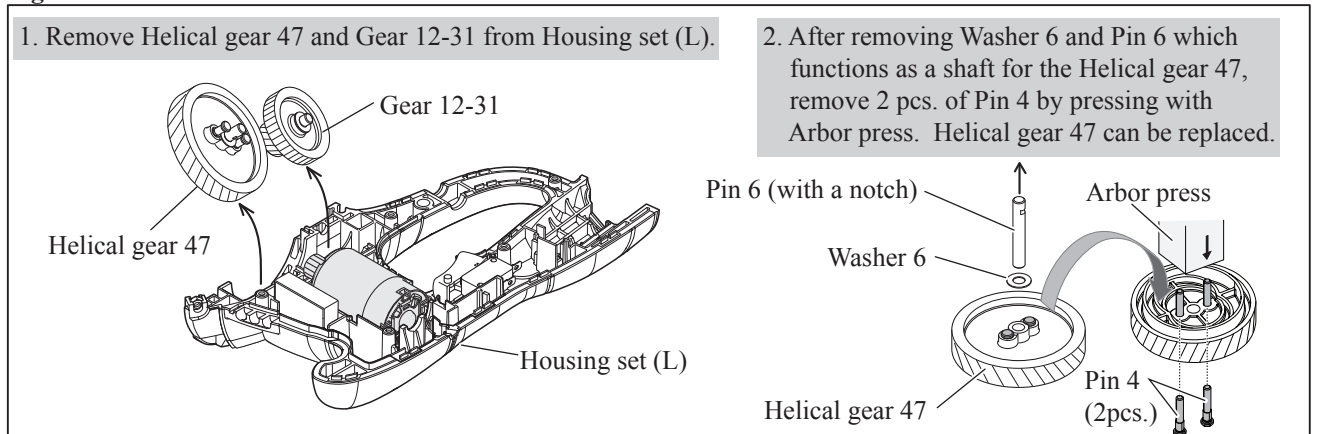
(1) Remove Blade, Crank and Housing set (R) as illustrated in **Fig. 2**.

Fig. 2



(2) After removing Housing set (R), Helical gear 47 and Gear 12-31 can be removed. (**Fig. 3**)

Fig. 3



► **Repair**

[2] DISASSEMBLY/ASSEMBLY

[2]-1. Gear 12-31, Helical gear 47

ASSEMBLING

- (1) Assemble Helical gear 47, Gear 12-31. (Figs. 4, 5)
- And mount them to Housing set (L). (Fig. 6)

Fig. 4

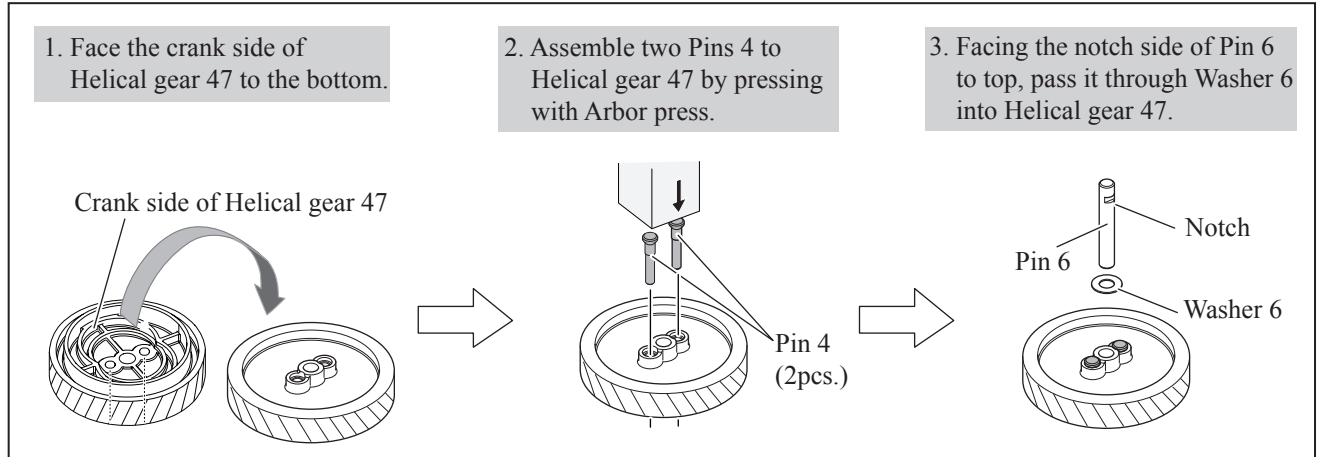


Fig. 5

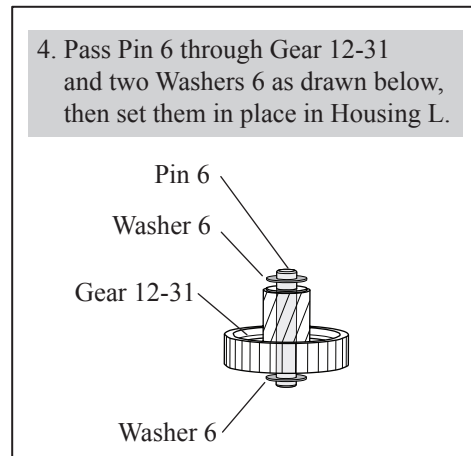
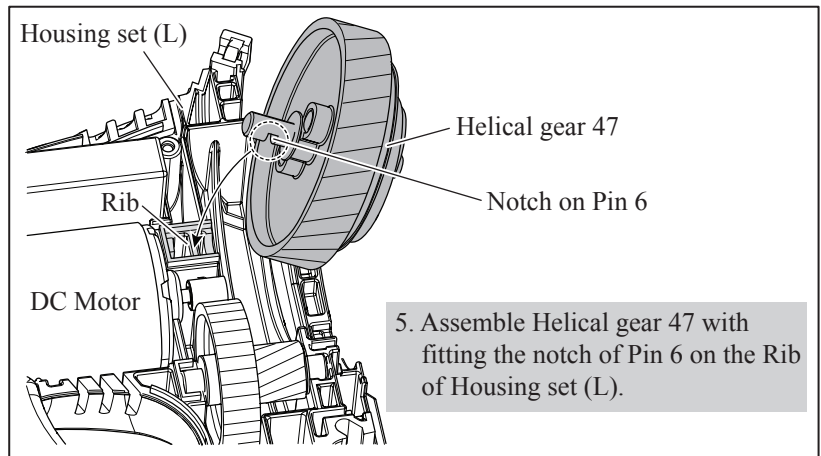
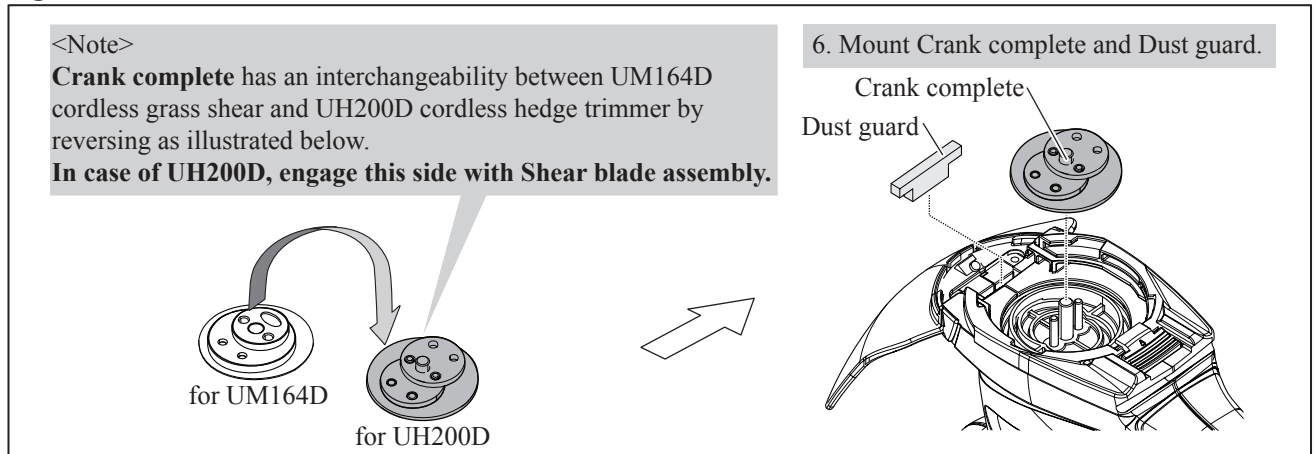


Fig. 6



- (2) Assemble Protector to housing set. (Center right in Fig. 2)
- (3) Mount Crank complete. (Fig. 7)

Fig. 7



- (4) Mount Shear blade assembly and Under cover. See Figs. 10, 11 in “[3]-3. Shear Blade Assembly”.

► **Repair**

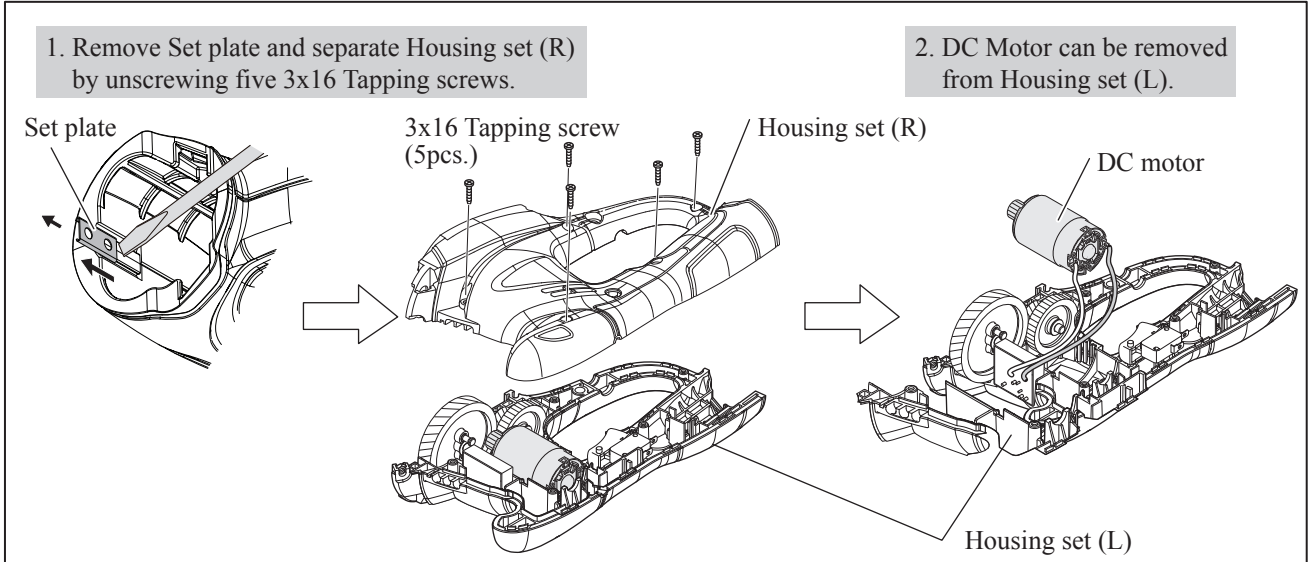
[2] DISASSEMBLY/ASSEMBLY

[2]-2. DC motor

DISASSEMBLING

(1) Disassemble DC motor. (**Fig. 8**)

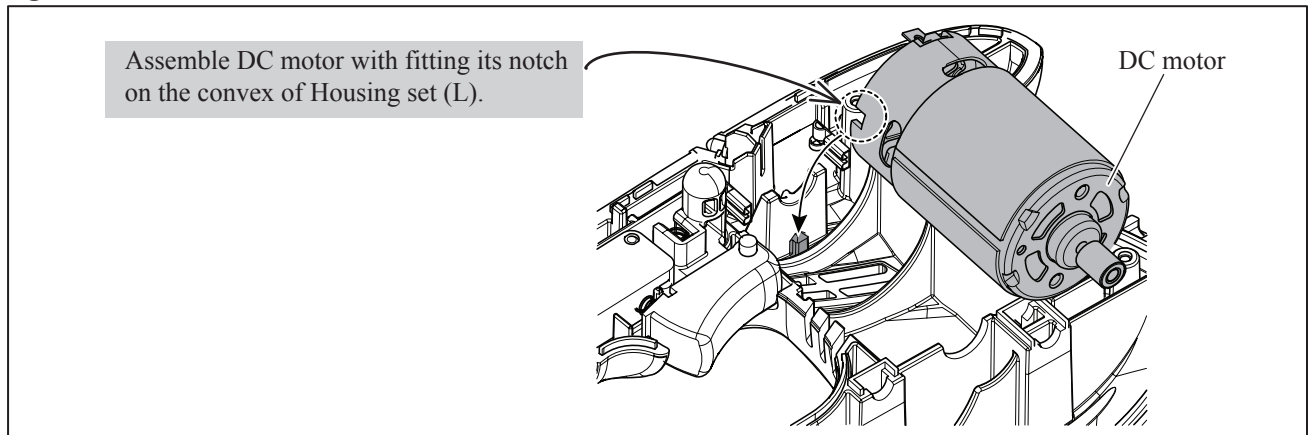
Fig. 8



ASSEMBLING

Set DC motor to Housing set (L). (**Fig. 9**)

Fig. 9



► **Repair**

[2] DISASSEMBLY/ASSEMBLY

[2]-3. Shear blade assembly

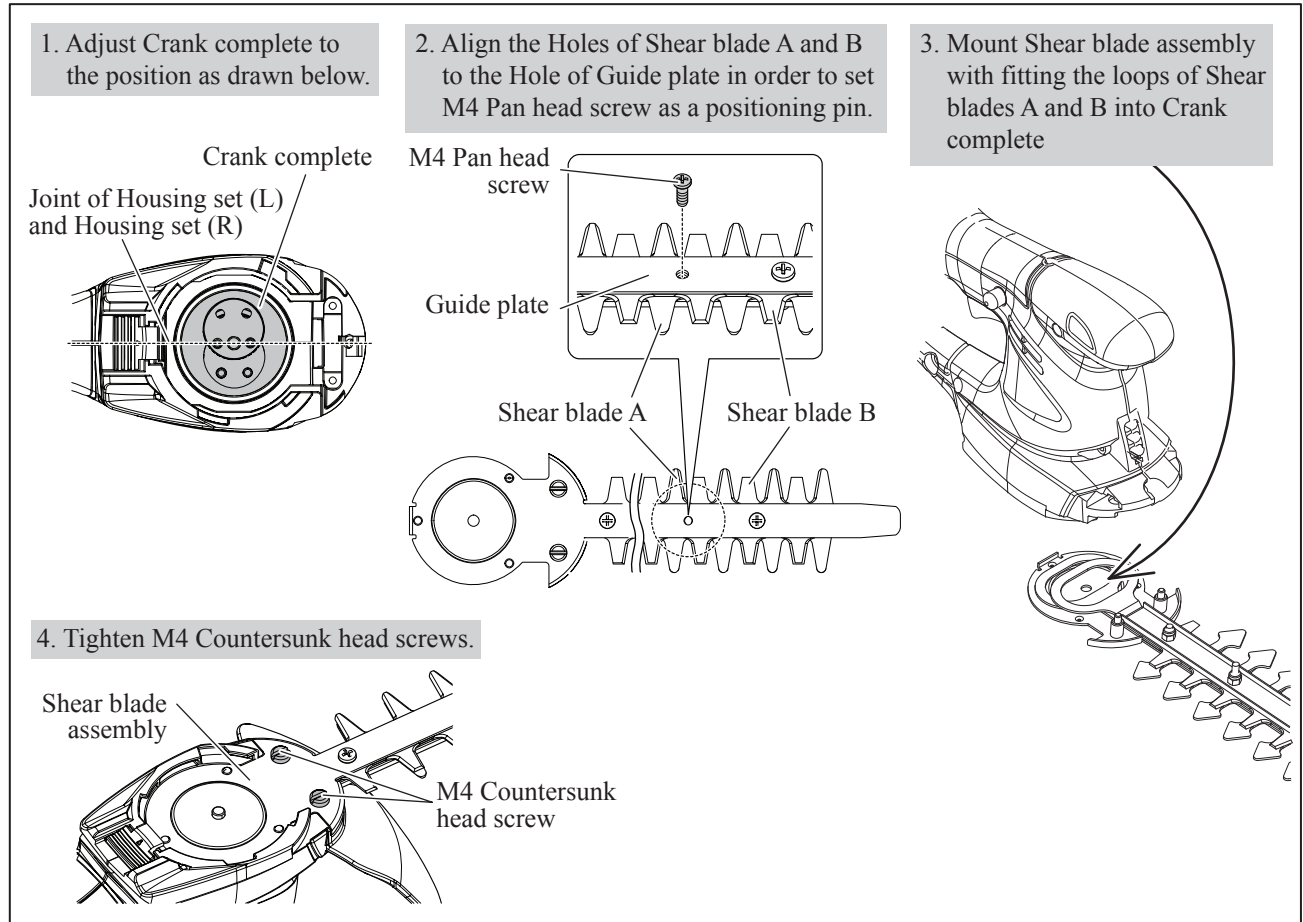
DISASSEMBLING

- (1) Pull the rear portion of Base frame toward rear side designated with arrow. (**Top left in Fig. 2**)
- (2) With pressing Lock lever, turn under cover complete to the unlocked position. (**Top right in Fig. 2**)
- (3) Disassemble Under cover, and then remove Shear blade assembly. (**Center left in Fig. 2**)

ASSEMBLING

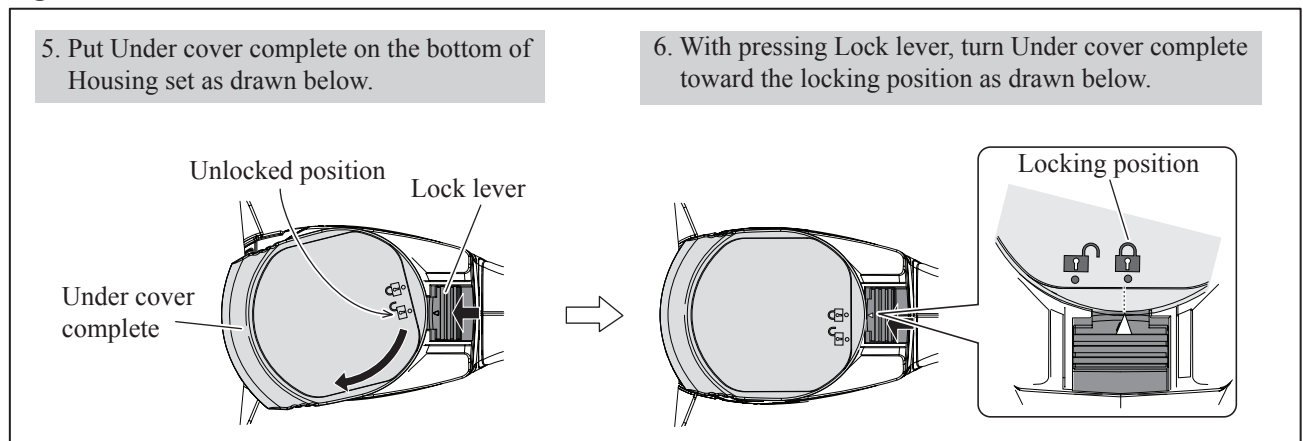
- (1) Mount Shear blade assembly. (**Fig. 10**)

Fig. 10



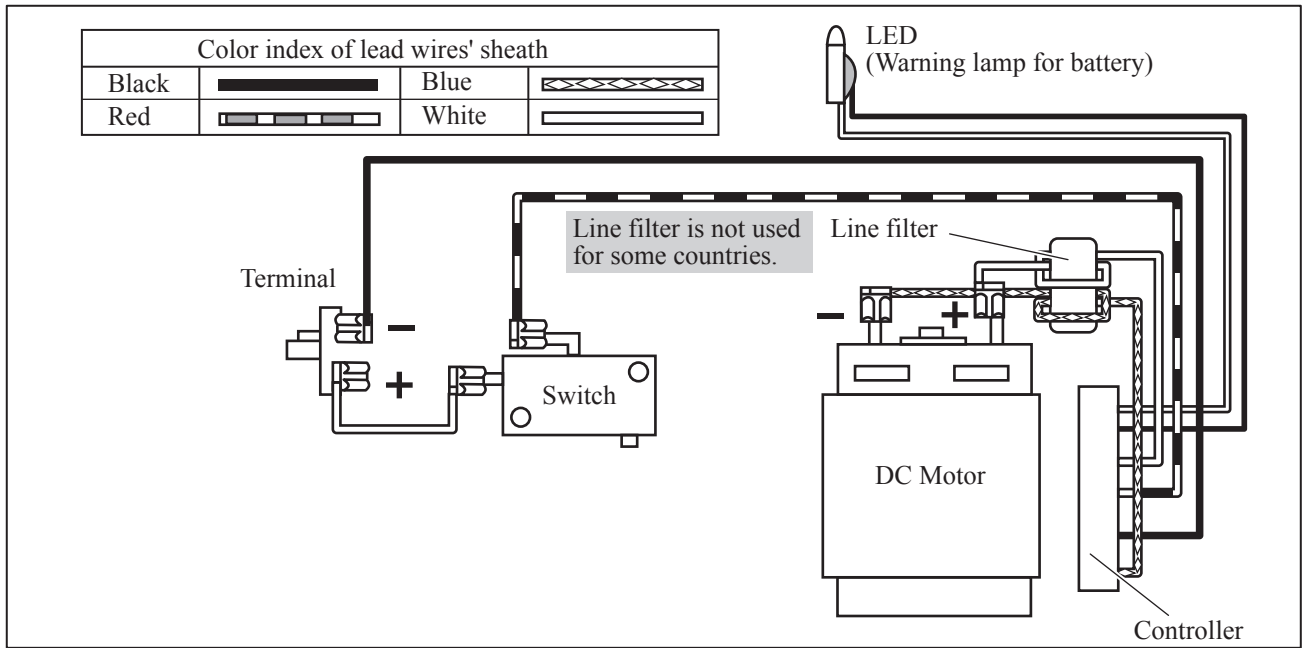
- (2) Mount Under cover complete. (**Fig. 11**)

Fig. 11



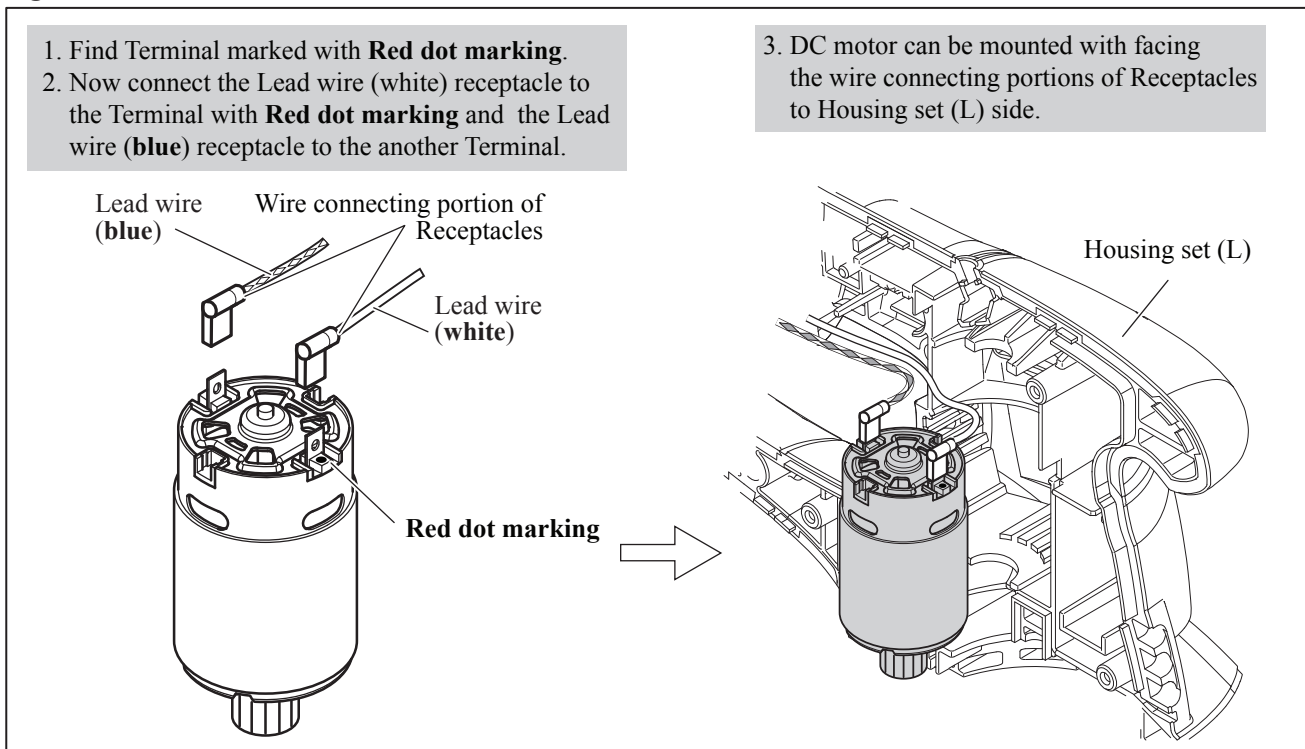
► **Circuit diagram**

Fig. D-1



► **Wiring diagram**

Fig. D-2



► **Wiring diagram (cont.)**

Fig. D-3

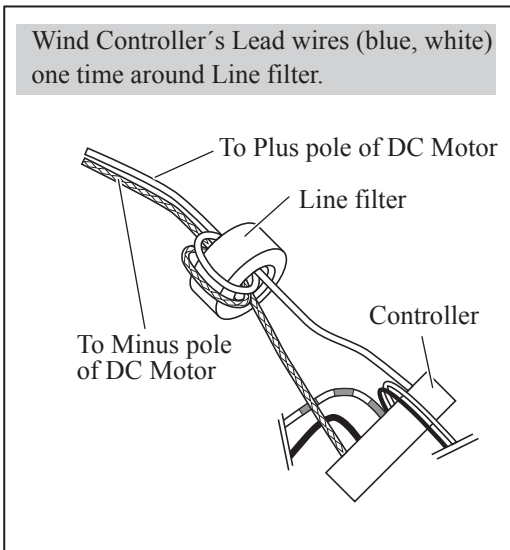


Fig. D-4

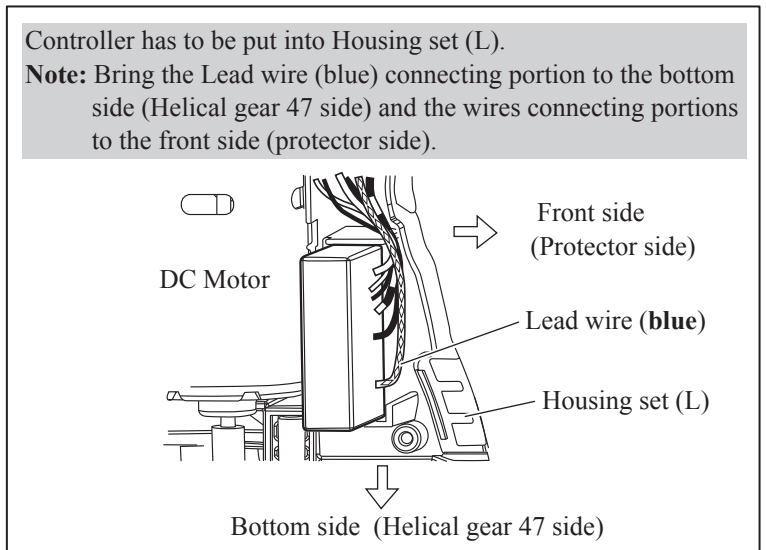


Fig. D-5

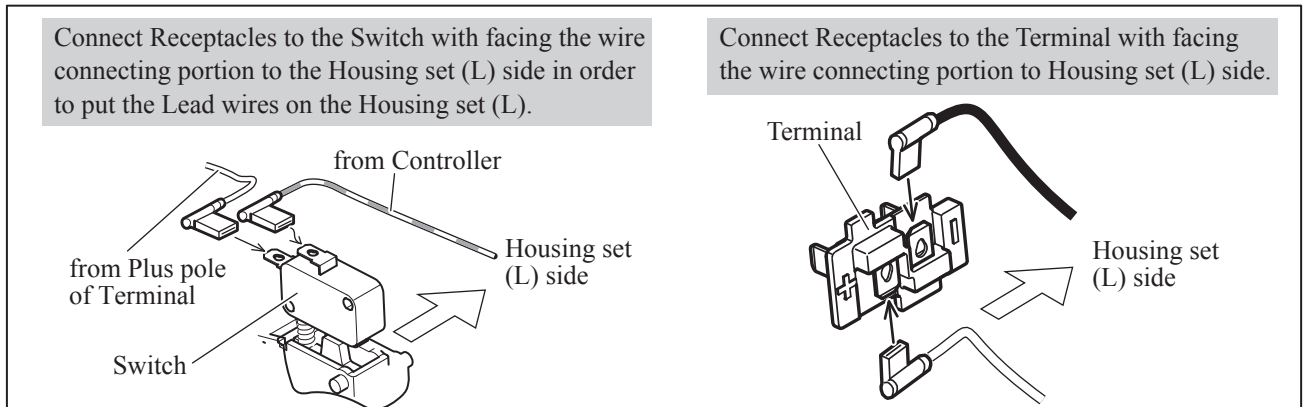


Fig. D-6

